



Holy Enterprise Limited

FL.2, No.12 North Ave.1, Industrial Rd. East, Gusan, Guzhen, Zhongshan, Guangdong, China

Specification

6FM-100DC 12V100AH/10HR

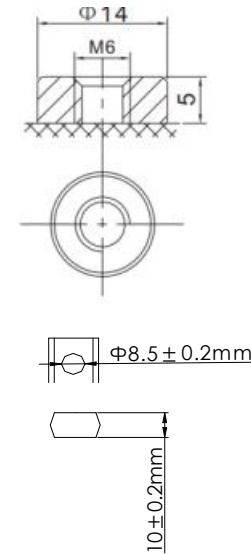
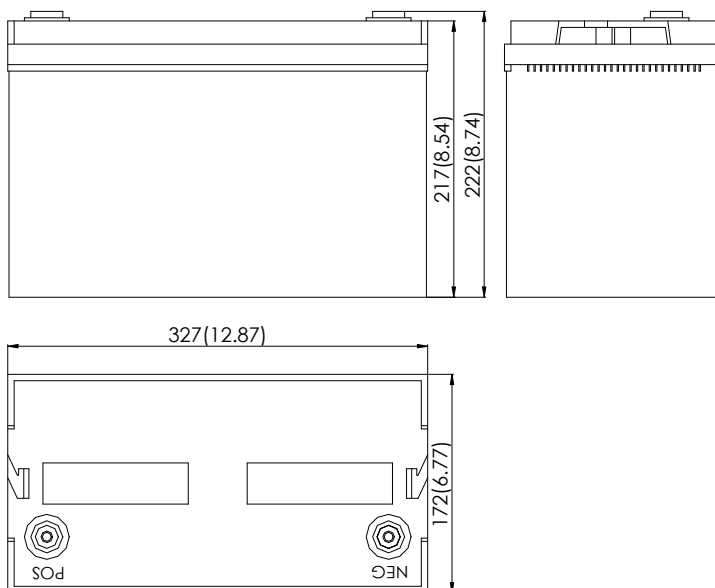
Cells Per Unit	6
Voltage Per Unit	12
Capacity	100AH@10hr-rate to 1.8V per cell @ 25°C
Weight	Approx.30.0kg (Tolerance±3%)
Max. Discharge Current	1000 A(5sec)
Internal Resistance	Approx.5.0 mΩ
Operating Temperature Range	Discharge: -20°C~50°C Charge: 0°C~40°C Storage: -20°C~50°C
Normal Operating Temperature	25±3°C
Float Charging Voltage	2.25 to 2.27 VDC/unit Average at 25°C
Maximum Charging Current	25.0A
Equalization and Cycle service	2.35 to 2.40 VDC /unit Average at 25°C
Terminal	Terminal: NB/B



Application

Uninterruptible Power System;
Communication Equipments;
Solar Power Systems;
Solar Power Street Light;
Wind Power Systems

Dimension: 327(L) ×172 (W) ×217 (H) (Total 222/232 mm)



Constant Current Discharge Characteristics: A(25°C)

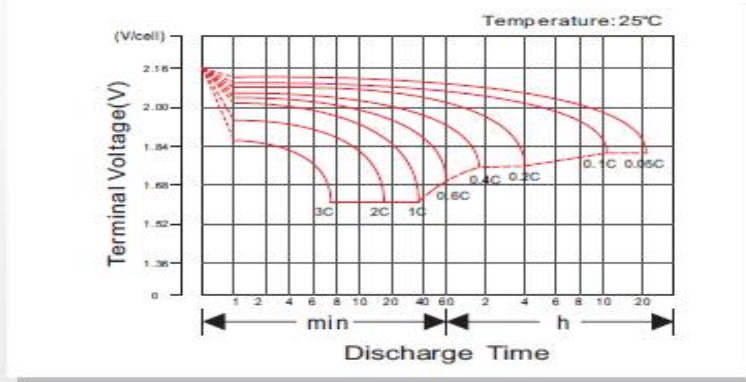
F.V/Time	10MIN	15MIN	30MIN	60MIN	2HR	3HR	4HR	5HR	8HR	10HR	20HR
1.80V/cell	175.2	153.5	102.4	62	37.33	25.75	21.11	17.29	11.92	10.1	5.357
1.75V/cell	192.1	166.5	107.1	63.5	38.02	26.47	21.62	17.61	12.12	10.2	5.462
1.70V/cell	208.2	174.9	109.8	64.1	38.31	26.57	21.83	17.82	12.22	10.3	5.567
1.65V/cell	215.8	177.7	110.8	64.7	38.6	26.78	21.93	17.93	12.32	10.4	5.627
1.60V/cell	226.9	181.4	112.7	65	38.89	26.88	22.03	18.03	12.42	10.5	5.777

Constant Power Discharge Characteristics: W/Unit(25°C)

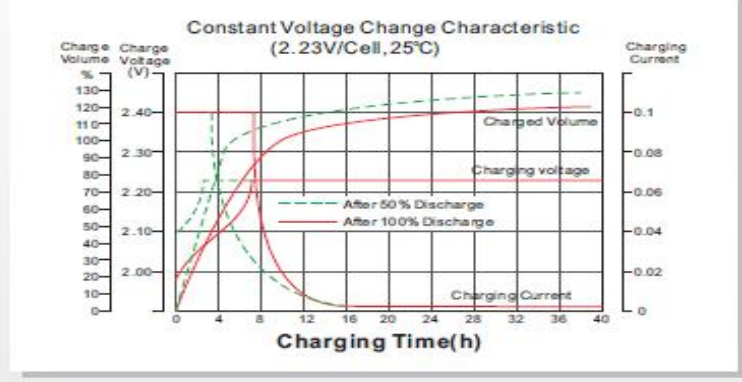
F.V/Time	10MIN	15MIN	30MIN	60MIN	2HR	3HR	4HR	5HR	8HR	10HR	20HR
1.80V/cell	1957	1712	1179	723.2	444.2	308.7	253.4	207.5	143	121.2	64.28
1.75V/cell	2123	1852	1230	736.8	450	317.4	259.3	211.3	145.4	122.4	65.54
1.70V/cell	2280	1941	1260	743.5	453.3	318.6	261.7	213.9	146.6	123.6	66.8
1.65V/cell	2342	1964	1269	749.3	456.0	320	262.3	214.6	147.6	124.7	68.06
1.60V/cell	2416	1996	1284	751.1	458.4	319.9	262.6	215.1	148.3	125.5	69.26

All mentioned values are average values.

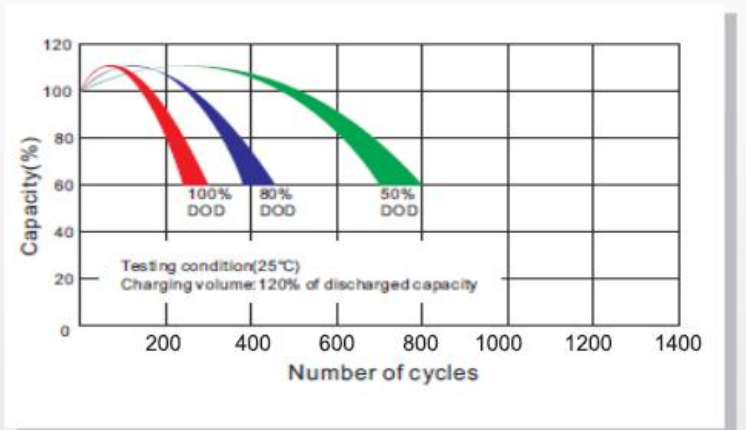
Discharge Characteristics Curve



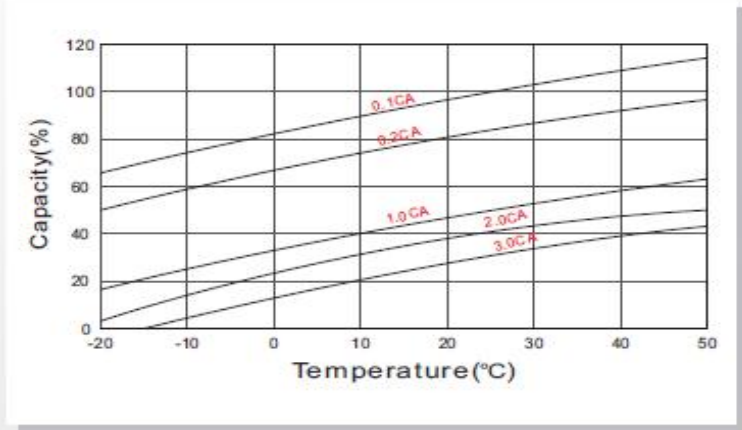
Charging Characteristics Curve



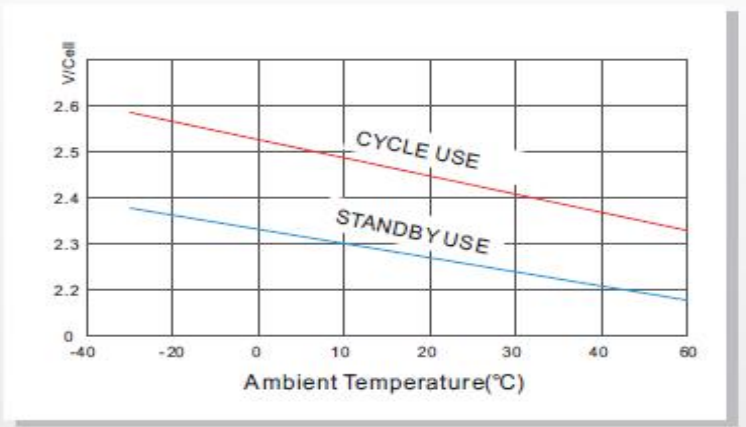
Cycle life in relation to depth of Discharge



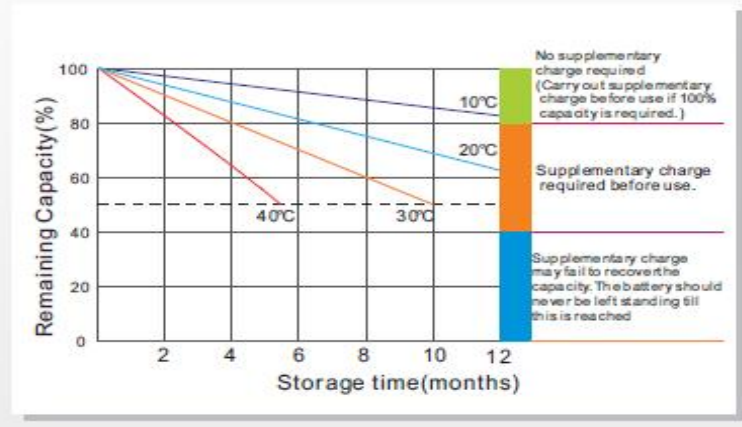
Temperature effects on Capacity



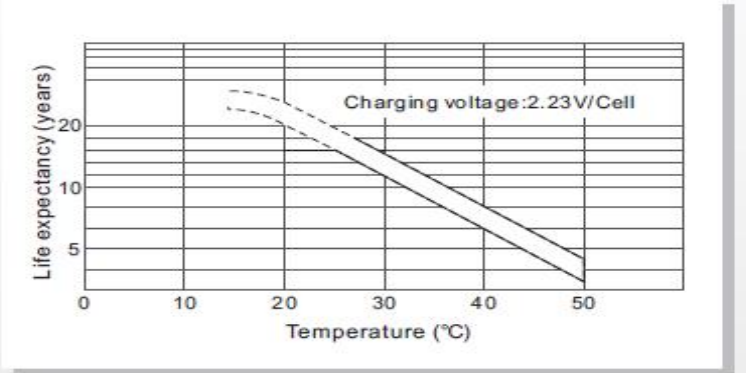
Relationship between charging voltage and temperature



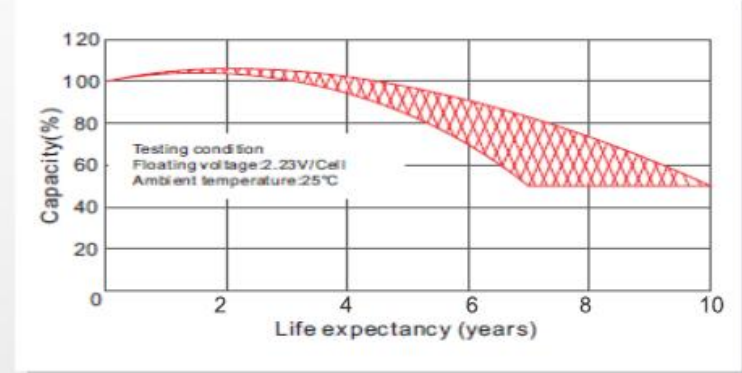
Self-discharge Characteristics



Temperature effects on Float life



Life Characteristics of Standby use



Maintenance & Cautions

- ※ Every month, recommend inspection every battery voltage;
- ※ Every three months, recommend equalization charge once;
Equalization charge method:
Discharge: 100% rate capacity discharge;
Charge: Max. Current 0.3CA, constant voltage 2.35-2.4V/Cell;
- ※ Effect of temperature on float charge voltage: -3mV/Cell;

CONTACT Us

Add: FL.2, No.12 North Ave.1, Industrial Rd. East, Gusan, Guzhen, Zhongshan, Guangdong, China,
T: +86-760- 8862 5562 | **F:** +86-760-8862 5562
Email: sales@holybattery.com johny5@126.com
Website: www.holybattery.com