



Holy Enterprise Limited

FL.2, No.12 North Ave.1, Industrial Rd. East, Gusan, Guzhen, Zhongshan, Guangdong, China

Specification

OPzV300-2V300AH/10HR

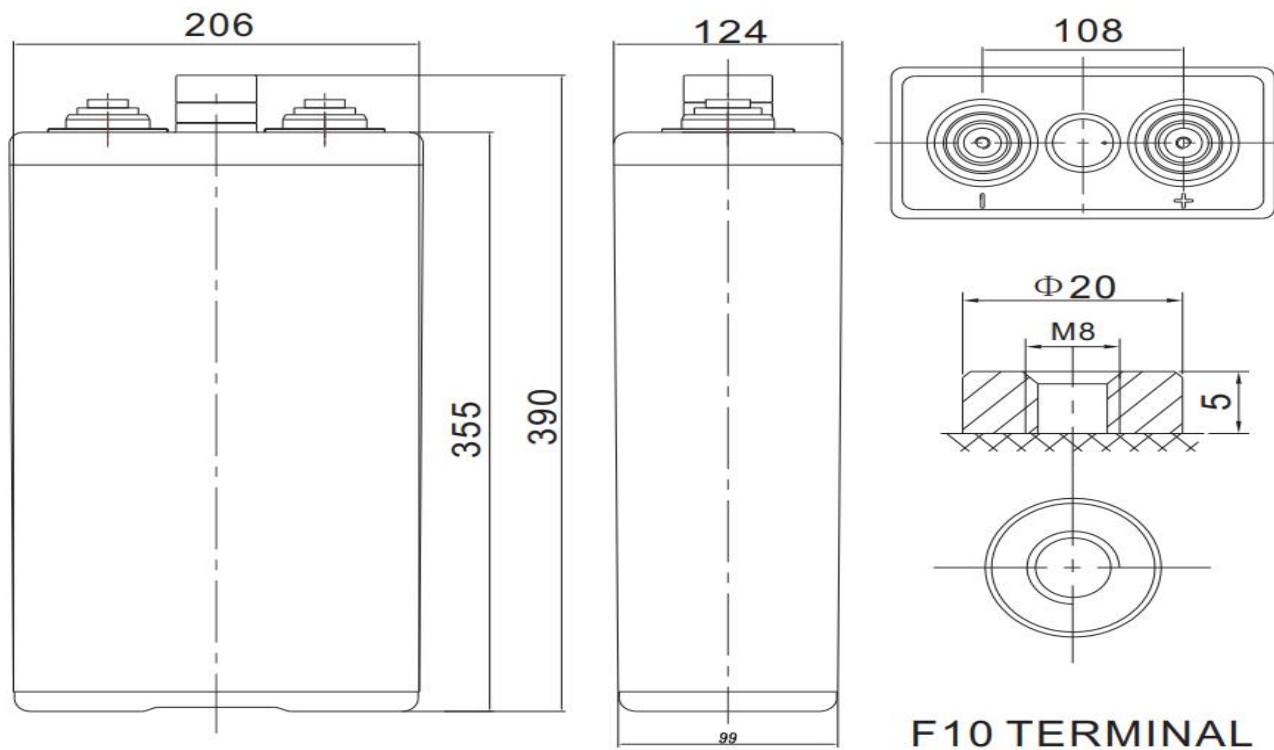
Cells Per Unit	1
Voltage Per Unit	2
Capacity	300AH@10hr-rate to 1.8V per cell @ 25°C
Weight	Approx.26.5kg (Tolerance±3%)
Max. Discharge Current	1350A(5sec)
Internal Resistance	Approx 0.85 mΩ
Operating Temperature Range	Discharge: -20°C~50°C Charge: 0°C~40°C Storage: -20°C~50°C
Normal Operating Temperature	25±3°C
Float Charging Voltage	2.25 to 2.27 VDC/unit Average at 25°C
Maximum Charging Current	75A
Equalization and Cycle service	2.35 to 2.40 VDC /unit Average at 25°C
Terminal	Terminal: M8



Application

Uninterruptible Power System;
Communication Equipments;
Solar Power Systems;
Solar Power Street Light;

Dimension: 124(L) ×206(W) ×356(H) (Total 389 mm)



F10 TERMINAL

Constant Current Discharge Characteristics: A(25°C)

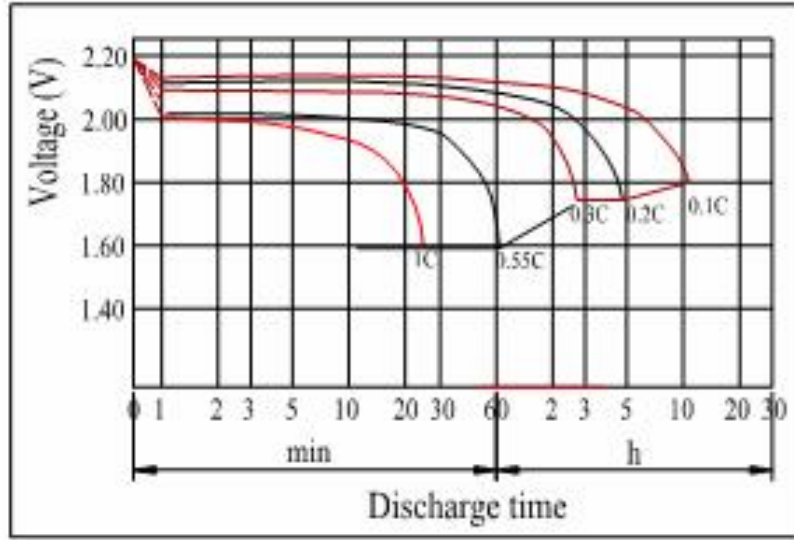
F.V/Time	10MIN	15MIN	30MIN	1HR	2HR	3HR	5HR	8HR	10HR	20HR
1.65V	450.7	364.1	251.0	167.2	106.7	79.76	53.73	37.13	31.05	16.30
1.70V	420.6	346.0	242.0	162.9	104.9	78.27	52.81	36.68	30.90	16.22
1.75V	373.9	315.9	228.5	156.1	102.3	76.78	52.05	36.23	30.45	15.99
1.80V	316.6	282.7	213.4	150.1	98.90	75.14	51.04	35.63	30.00	15.75
1.85V	257.8	233.2	183.4	134.0	90.24	69.04	47.31	33.23	28.05	14.71

Constant Power Discharge Characteristics: W(25°C)

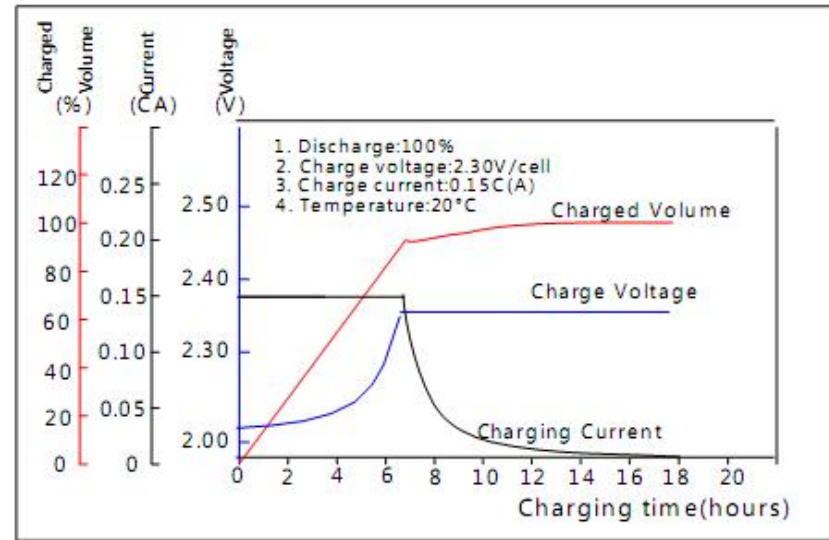
F.V/Time	10MIN	15MIN	30MIN	1HR	2HR	3HR	5HR	8HR	10HR	20HR
1.65V	782.4	646.9	461.4	314.8	203.8	153.4	104.2	73.05	61.5	32.29
1.70V	741.7	621.4	447.9	308.8	200.3	150.9	103.3	72.31	61.05	32.05
1.75V	672.3	577.7	426.9	298.7	196.0	148.4	101.6	71.56	60.45	31.74
1.80V	578.9	523.6	404.3	289.2	191.8	145.8	99.85	70.51	59.55	31.26
1.85V	479.4	439.3	350.2	258.5	175.4	134.7	92.98	66.02	55.95	29.37

All mentioned values are average values.

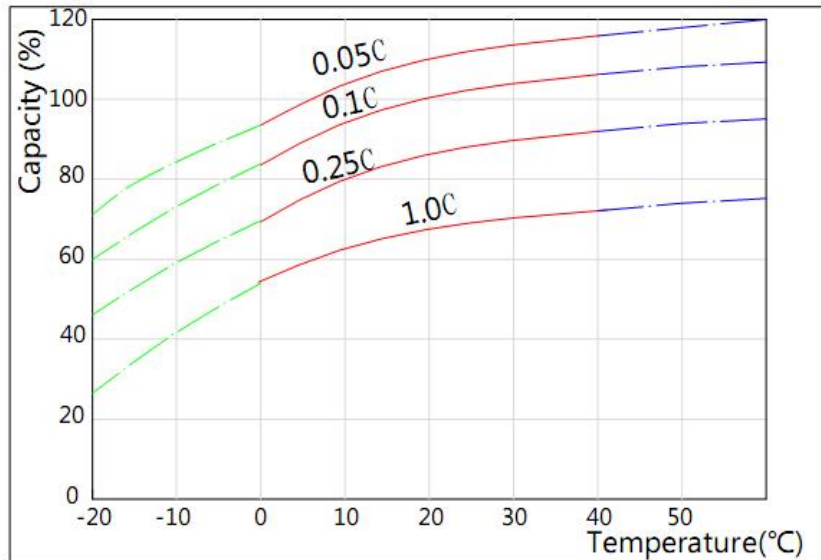
Discharge Characteristics(25°C)



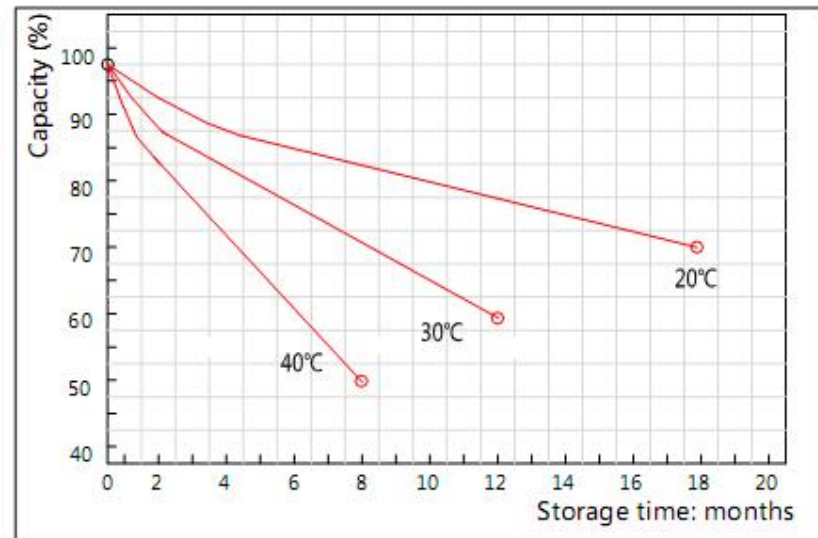
Charging Characteristics(25°C)



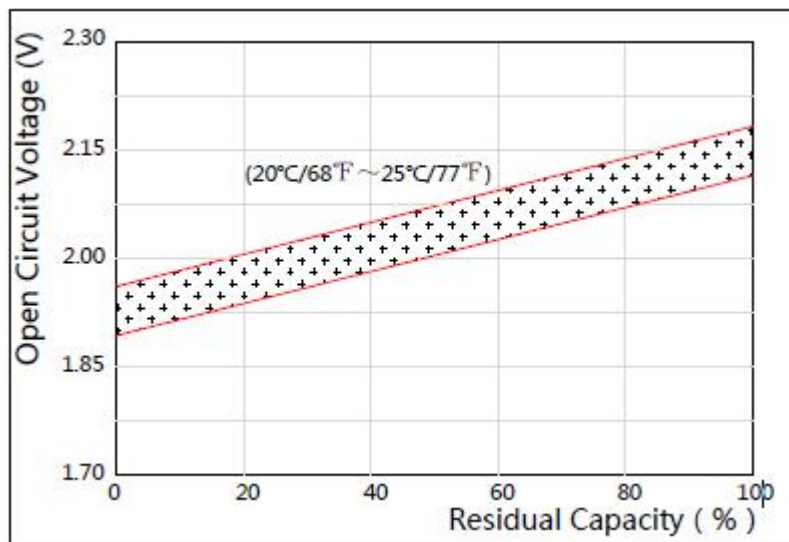
Effect of Temperature on Capacity



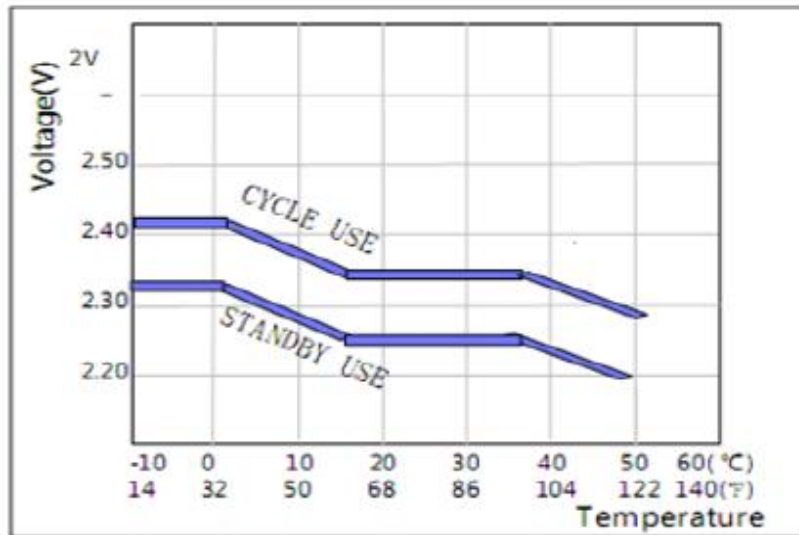
Self-discharge Characteristics



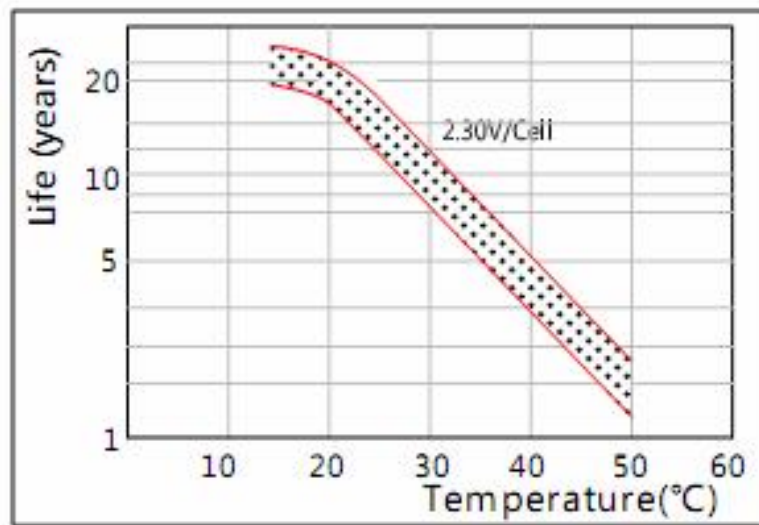
Open Circuit Voltage and Residual Capacity (25°C)



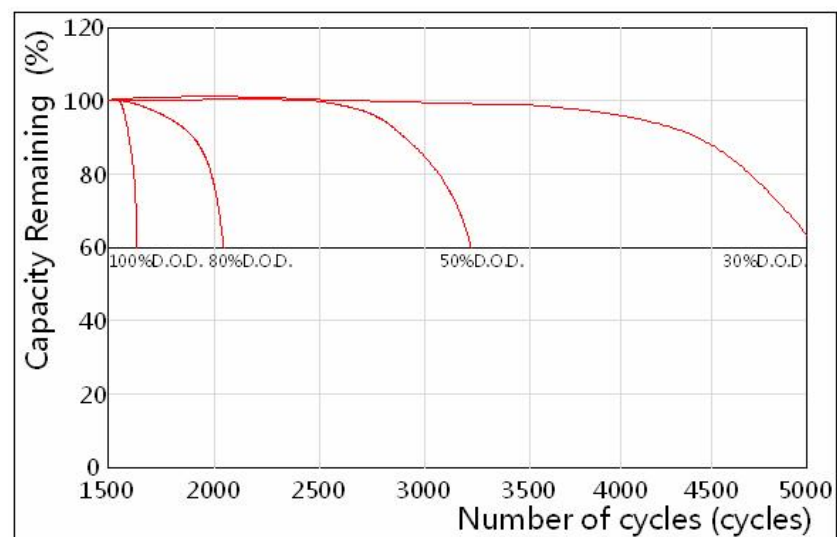
Charging Voltage and Temperature



Floating Life on Temperature



Cycle Life on D.O.D(25°C)



Maintenance & Cautions

- ※ Every month, recommend inspection every battery voltage;
- ※ Every three months, recommend equalization charge once;
Equalization charge method:
Discharge: 100% rate capacity discharge;
Charge: Max. Current 0.3CA, constant voltage 2.35-2.4V/Cell;
- ※ Effect of temperature on float charge voltage: -3mV/Cell;

CONTACT Us

Add: FL.2, No.12 North Ave.1, Industrial Rd. East, Gusan, Guzhen, Zhongshan, Guangdong, China,
T: +86-760- 8862 5562 | **F:** +86-760-8862 5562
Email: sales@holybattery.com johny5@126.com
Website: www.holybattery.com