



# Holy Enterprise Limited

FL.2, No.12 North Ave.1, Industrial Rd. East, Gusan, Guzhen, Zhongshan, Guangdong, China

## Specification

6-GFM-100 12V100AH/10HR

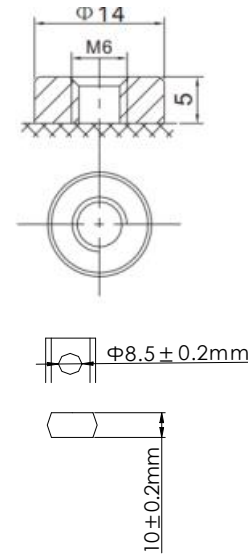
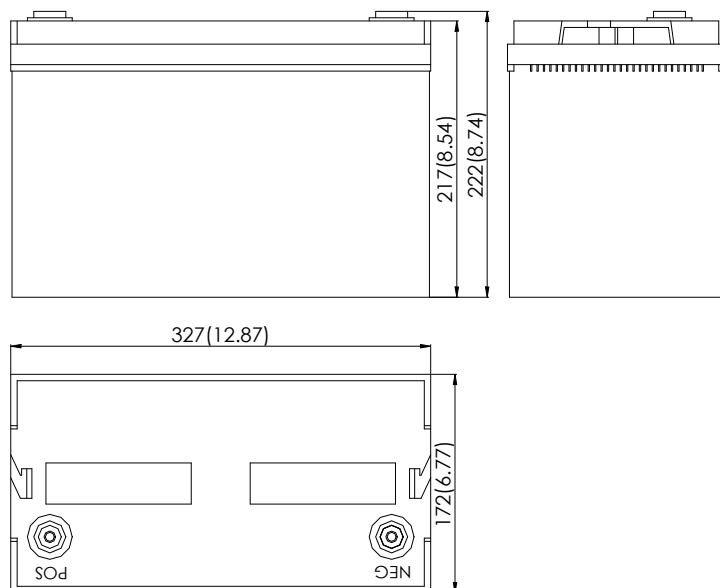
Cells Per Unit	6
Voltage Per Unit	12
Capacity	100AH@10hr-rate to 1.8V per cell @ 25°C
Weight	Approx.30.0kg (Tolerance±3%)
Max. Discharge Current	1000 A(5sec)
Internal Resistance	Approx.5.0 mΩ
Operating Temperature	Discharge: -20°C~50°C Charge: 0°C~40°C Storage: -20°C~50°C
Normal Operating Temperature	25±3°C
Float Charging Voltage	2.25 to 2.27 VDC/unit Average at 25°C
Maximum Charging Current	25.0A
Equalization and Cycle service	2.35 to 2.40 VDC /unit Average at 25°C
Terminal	Terminal: NB/B



## Application

Alarm Systems  
Electronic Toys  
Medical Equipment  
Cable Television  
Communications Equipment  
Electronic Cash Registers  
Electric Test Equipment  
Emergency lighting Systems  
UPS

Dimension: 327(L) ×172 (W) ×217 (H) (Total 222/232 mm)



### Constant Current Discharge Characteristics: A(25°C)

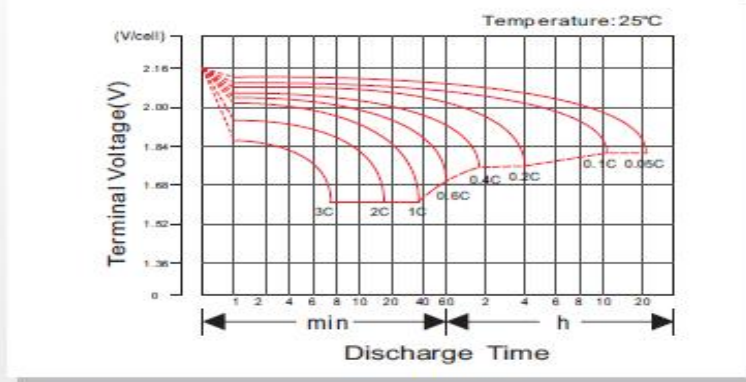
F.V/Time	10MIN	15MIN	30MIN	60MIN	2HR	3HR	4HR	5HR	8HR	10HR	20HR
1.80V/cell	157.8	138.4	90.0	52.9	31.7	25.0	19.9	17.0	12.0	10.0	5.25
1.75V/cell	174.3	149.9	94.1	55.0	32.9	25.8	20.4	17.4	12.2	10.1	5.30
1.70V/cell	190.4	161.0	98.5	57.1	34.1	26.6	21.0	17.9	12.3	10.3	5.36
1.65V/cell	206.8	171.9	103.0	59.0	35.2	27.3	21.6	18.4	12.5	10.4	5.43
1.60V/cell	224.9	179.8	107.3	61.1	36.4	28.2	22.2	18.9	12.7	10.5	5.52

### Constant Power Discharge Characteristics: W/Unit(25°C)

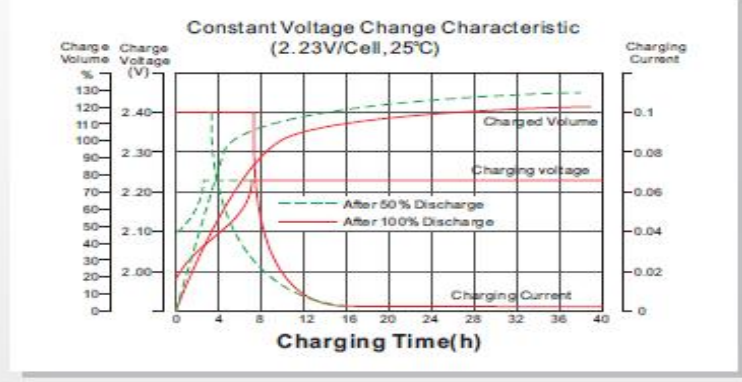
F.V/Time	10MIN	15MIN	30MIN	60MIN	2HR	3HR	4HR	5HR	8HR	10HR	20HR
1.80V/cell	1729.8	1569.6	1031.4	610.8	367.8	291.60	232.2	199.2	141.6	118.8	62.40
1.75V/cell	1878.6	1676.4	1068.6	631.2	379.8	299.40	238.2	204.0	143.4	120.0	63.00
1.70V/cell	2016.0	1775.4	1106.4	651.6	391.8	307.20	243.6	208.8	145.2	121.2	63.60
1.65V/cell	2150.4	1867.8	1146.0	669.0	402.6	314.40	249.6	213.6	147.0	123.0	64.20
1.60V/cell	2232.6	1925.4	1181.4	688.8	414.0	323.40	255.6	218.4	148.8	124.2	65.40

All mentioned values are average values.

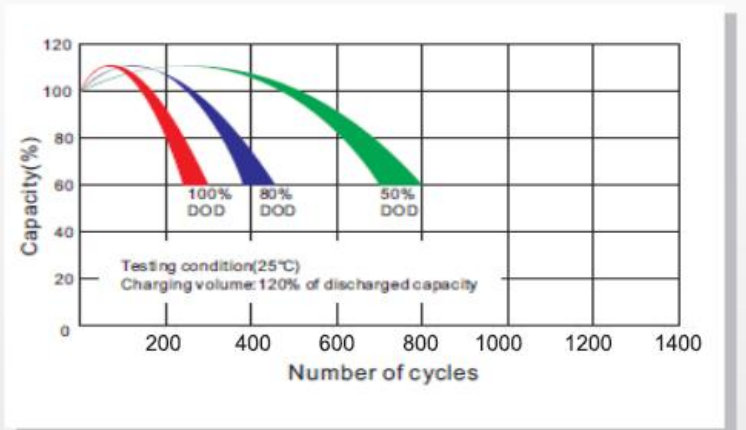
### Discharge Characteristics Curve



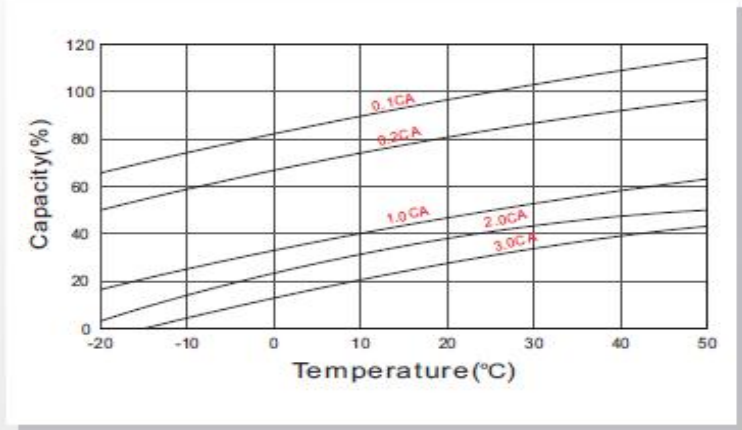
### Charging Characteristics Curve



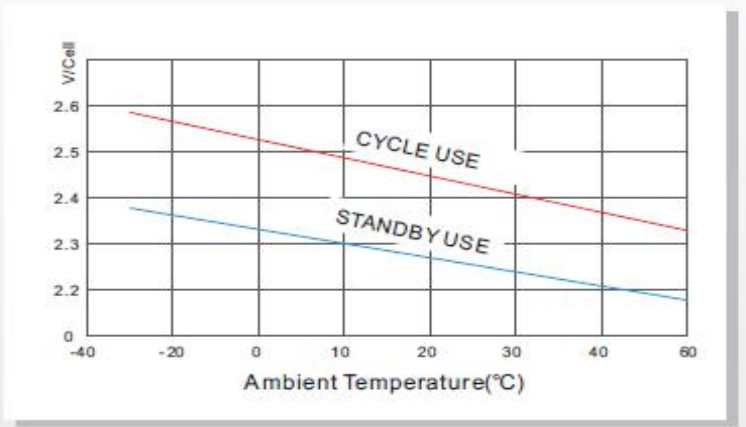
### Cycle life in relation to depth of Discharge



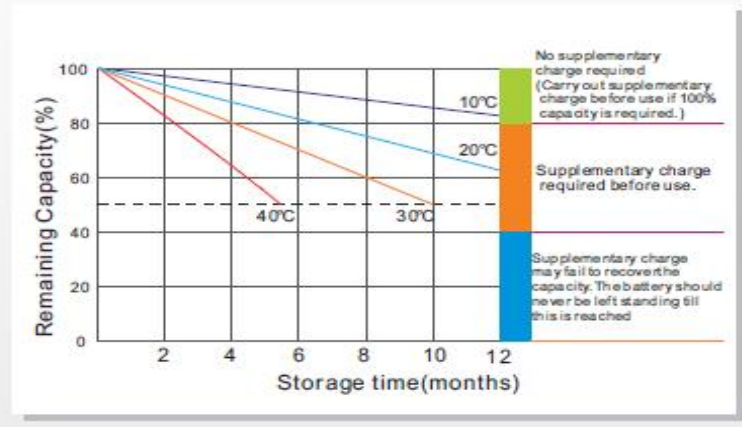
### Temperature effects on Capacity



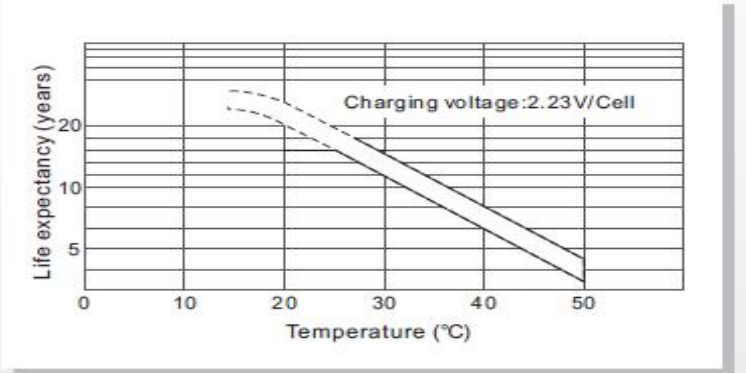
### Relationship between charging voltage and temperature



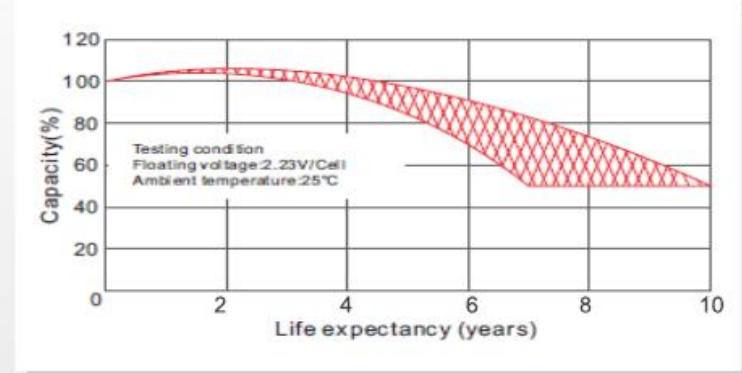
### Self-discharge Characteristics



### Temperature effects on Float life



### Life Characteristics of Standby use



### Maintenance & Cautions

- ※ Every month, recommend inspection every battery voltage;
- ※ Every three months, recommend equalization charge once;  
Equalization charge method:  
Discharge: 100% rate capacity discharge;  
Charge: Max. Current 0.3CA, constant voltage 2.35-2.4V/Cell;
- ※ Effect of temperature on float charge voltage: -3mV/Cell;

### Contact Us

**Add:** FL.2, No.12 North Ave.1, Industrial Rd. East, Gusan, Guzhen, Zhongshan, Guangdong, China,  
**T:** +86-760- 8862 5562 | **F:** +86-760-8862 5562  
**Email:** [sales@holybattery.com](mailto:sales@holybattery.com) [johny5@126.com](mailto:johny5@126.com)  
**Website:** [www.holybattery.com](http://www.holybattery.com)