



# Holy Enterprise Limited

FL.2, No.12 North Ave.1, Industrial Rd. East, Gusan, Guzhen, Zhongshan, Guangdong, China

## Specification

6FM-75DC 12V75AH/10HR

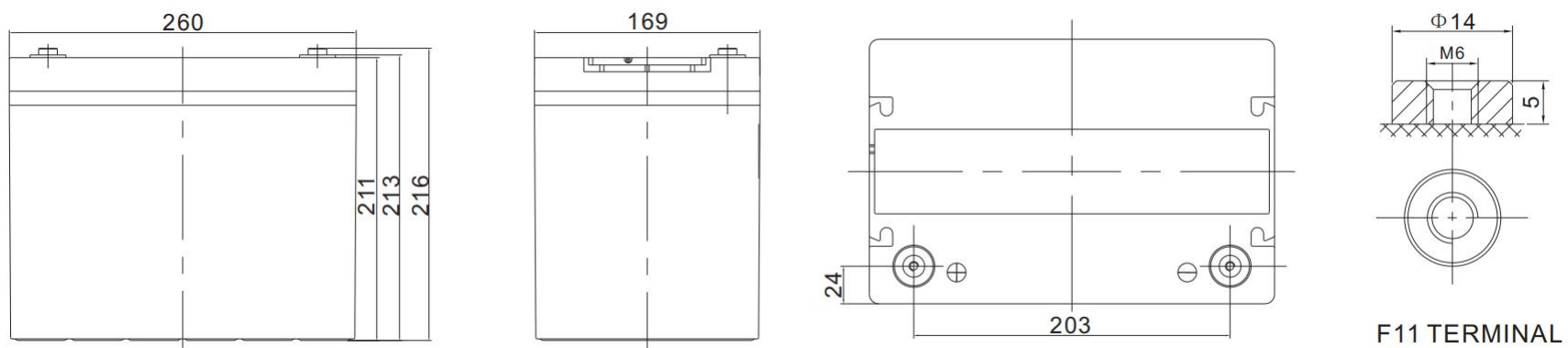
Cells Per Unit	6
Voltage Per Unit	12
Capacity	75AH@10hr-rate to 1.8V per cell @ 25°C
Weight	Approx.22.5kg (Tolerance±3%)
Max. Discharge Current	750 A(5sec)
Internal Resistance	Approx 6.0 mΩ
Operating Temperature Range	Discharge: -20°C~50°C Charge: 0°C~40°C Storage: -20°C~50°C
Normal Operating Temperature Range	25±3°C
Float Charging Voltage	2.25 to 2.27 VDC/unit Average at 25°C
Recommended Maximum Charging Current Limit	18.5A
Equalization and Cycle service	2.35 to 2.40 VDC /unit Average at 25°C
Terminal	Terminal: NB/B



## Application

Uninterruptible Power System;  
Communication Equipments;  
Solar Power Systems;  
Solar Power Street Light;  
Wind Power Systems  
UPS

Dimension: 260(L) ×169 (W) ×211 (H) (Total 213 mm)



### Constant Current Discharge Characteristics: A(25°C)

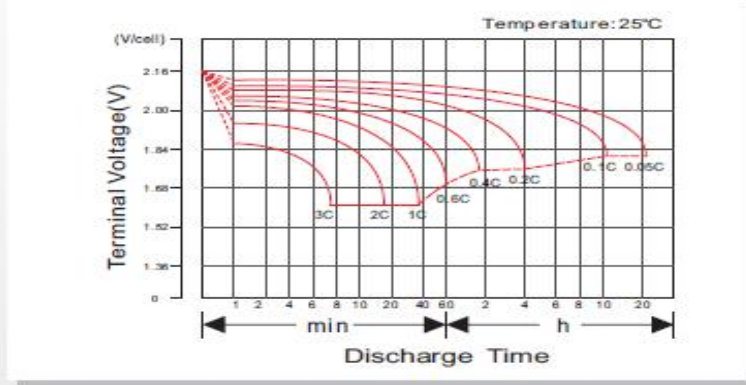
F.V/Time	10MIN	15MIN	30MIN	60MIN	2HR	3HR	4HR	5HR	8HR	10HR	20HR
1.80V/cell	131.4	115.1	76.8	46.5	28.00	19.31	15.83	12.97	8.94	7.58	4.02
1.75V/cell	144.1	124.9	80.3	47.6	28.52	19.85	16.22	13.21	9.09	7.65	4.10
1.70V/cell	156.2	131.2	82.4	48.1	28.73	19.93	16.37	13.37	9.17	7.73	4.18
1.65V/cell	161.9	133.3	83.1	48.5	28.95	20.09	16.45	13.45	9.24	7.80	4.22
1.60V/cell	170.2	136.1	84.5	48.8	29.17	20.16	16.52	13.52	9.32	7.88	4.33

### Constant Power Discharge Characteristics: W/Unit(25°C)

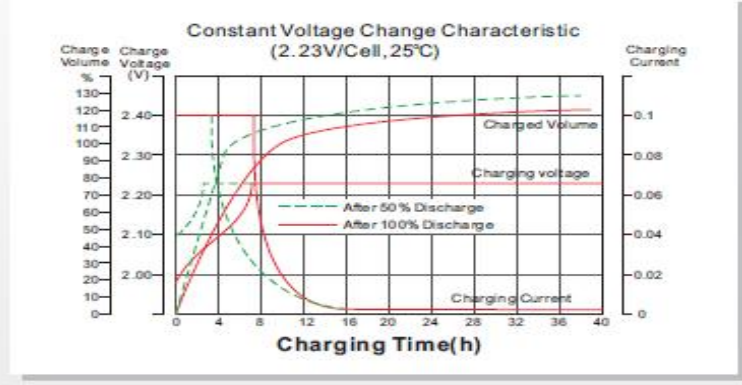
F.V/Time	10MIN	15MIN	30MIN	60MIN	2HR	3HR	4HR	5HR	8HR	10HR	20HR
1.80V/cell	1467.8	1284.0	884.3	542.4	333.15	231.53	190.05	155.63	107.25	90.90	48.21
1.75V/cell	1592.3	1389.0	922.5	552.6	337.50	238.05	194.48	158.48	109.05	91.80	49.16
1.70V/cell	1710.0	1455.8	945.0	557.6	339.98	238.95	196.28	160.43	109.95	92.70	50.10
1.65V/cell	1756.5	1473.0	951.8	562.0	342.00	240.00	196.73	160.95	110.70	93.53	51.05
1.60V/cell	1812.0	1497.0	963.0	563.3	343.80	239.93	196.95	161.33	111.23	94.13	51.95

All mentioned values are average values.

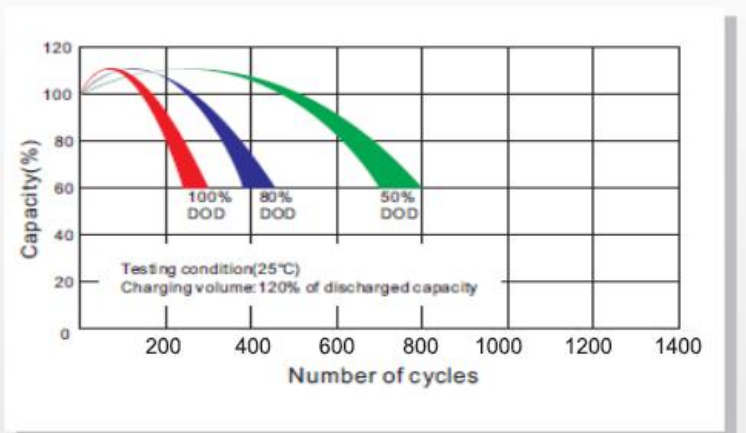
### Discharge Characteristics Curve



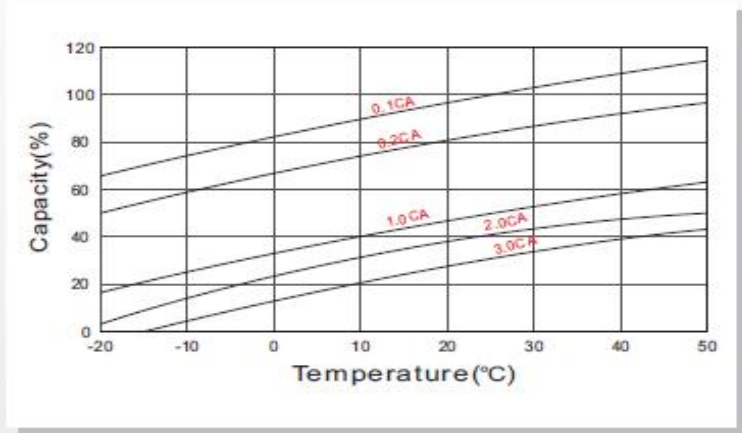
### Charging Characteristics Curve



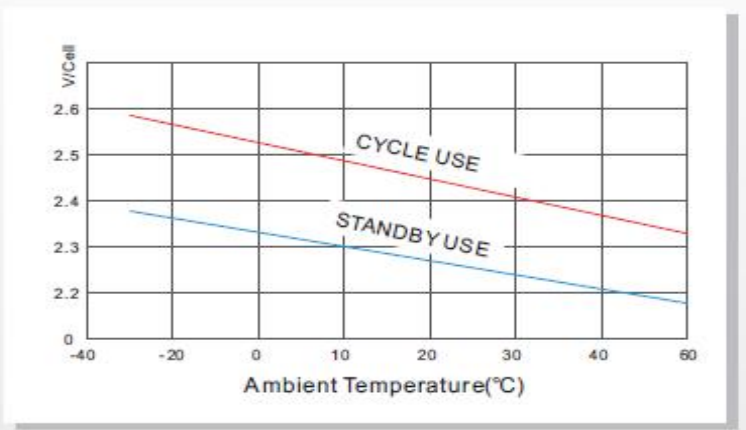
### Cycle life in relation to depth of Discharge



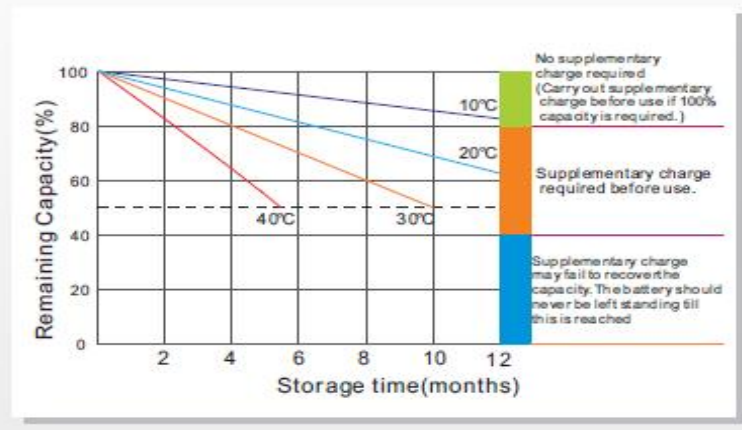
### Temperature effects on Capacity



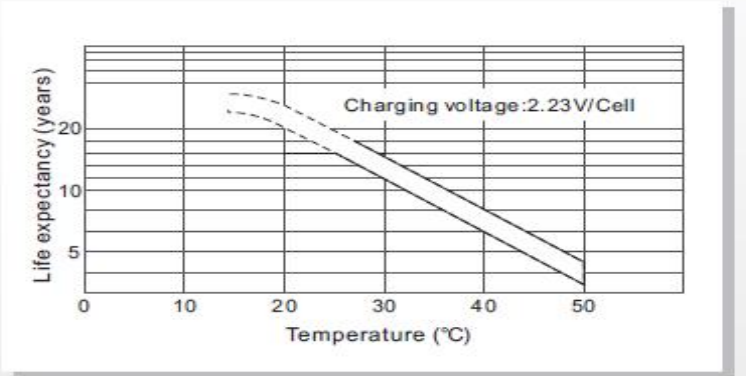
### Relationship between charging voltage and temperature



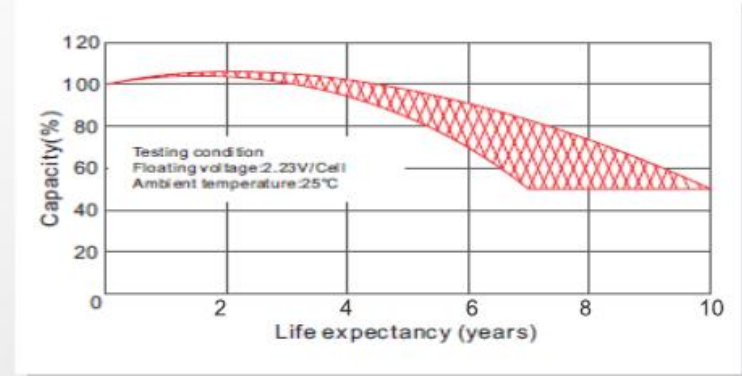
### Self-discharge Characteristics



### Temperature effects on Float life



### Life Characteristics of Standby use



### Maintenance & Cautions

- ※ Every month, recommend inspection every battery voltage;
- ※ Every three months, recommend equalization charge once;  
Equalization charge method:  
Discharge: 100% rate capacity discharge;  
Charge: Max. Current 0.3CA, constant voltage 2.35-2.4V/Cell;
- ※ Effect of temperature on float charge voltage: -3mV/Cell;

### CONTACT Us

**Add:** FL.2, No.12 North Ave.1, Industrial Rd. East, Gusan, Guzhen, Zhongshan, Guangdong, China,  
**T:** +86-760- 8862 5562 | **F:** +86-760-8862 5562  
**Email:** [sales@holybattery.com](mailto:sales@holybattery.com) [johny5@126.com](mailto:johny5@126.com)  
**Website:** [www.holybattery.com](http://www.holybattery.com)