



# Holy Enterprise Limited

FL.2, No.12 North Ave.1, Industrial Rd. East, Gusan, Guzhen, Zhongshan, Guangdong, China

## Specification

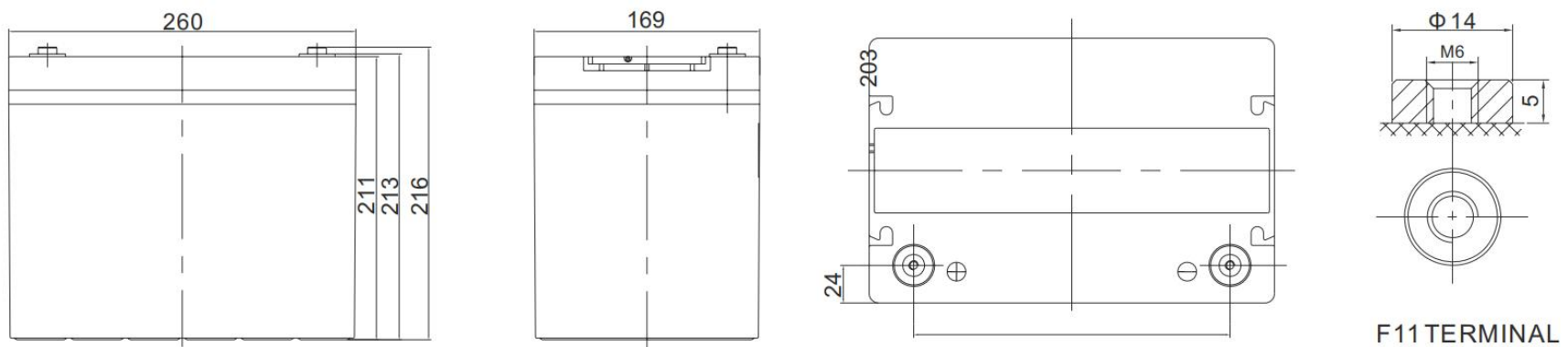
EV 6-EVF-70-12V70AH/3HR

Cells Per Unit	6
Voltage Per Unit	12
Capacity	70AH@3hr-rate to 1.75V per cell @ 25°C
Weight	Approx.: 24.50kg (Tolerance±3%)
Max. Discharge Current	700A(5sec)
Internal Resistance	Approx 7.0mΩ
Operating Temperature	Discharge: -20°C~50°C Charge: 0°C~40°C Storage: -20°C~50°C
Normal Operating Temperature	25±3°C
Float Charging Voltage	13.6 to 13.8 VDC/unit Average at 25°C
Maximum Charging Current	11.20A
Equalization and Cycle service	14.5 to 14.9 VDC /unit Average at 25°C
Terminal	Terminal: M6

## Application

Electric golf carts  
Electric wheelchairs  
Cleaning machines  
Electric Vehicles  
Power Tools  
Mowers

Dimension: 260(L) ×169(W) ×211(H) (Total 216 mm)



### Constant Current Discharge Characteristics: A(25°C)

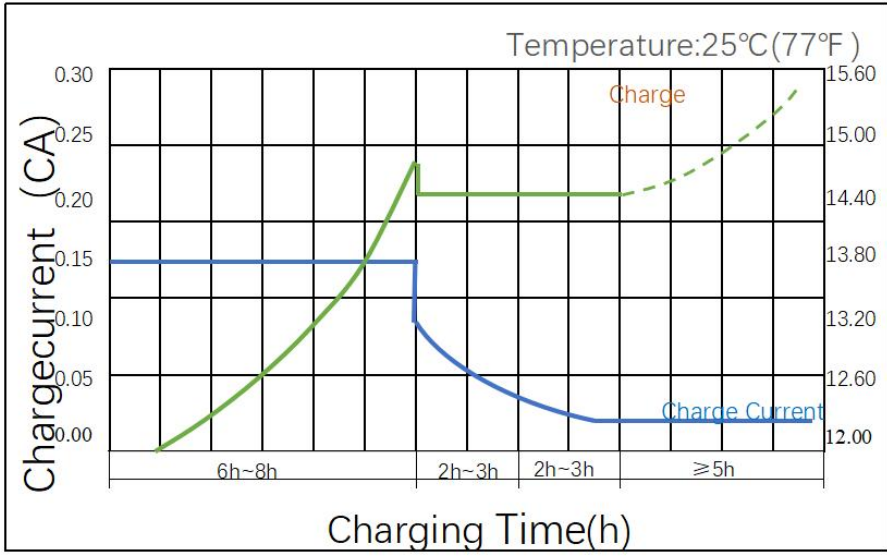
F.V/Time	5MIN	10MIN	15MIN	30MIN	1HR	2HR	3HR	10HR	20HR
9.60V	301.6	222.0	173.1	105.5	58.5	34.98	25.66	9.55	5.09
10.0V	292.8	211.3	169.5	103.7	58.23	34.72	25.47	9.45	5.00
10.2V	284.2	203.8	166.9	101.7	57.69	34.46	25.33	9.36	4.91
10.5V	255.2	188.1	158.9	101.0	57.15	34.20	25.24	9.27	4.82
10.8V	230.3	171.5	146.5	99.2	55.80	33.58	25.14	9.18	4.72

### Constant Power Discharge Characteristics: W/Cell(25°C)

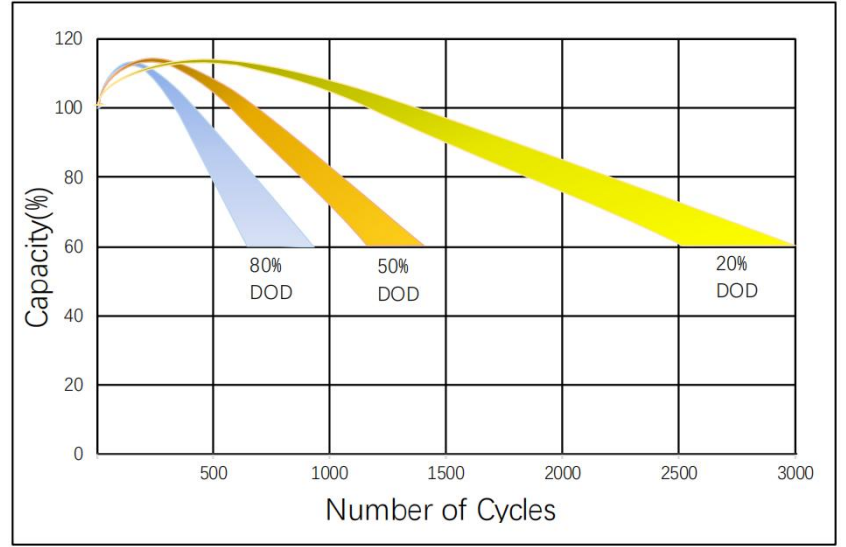
F.V/Time	5MIN	10MIN	15MIN	30MIN	1HR	2HR	3HR	10HR	20HR
9.60V	3181	2365	1887	1184	676	412.4	287.5	114.1	61.07
10.0V	3119	2292	1857	1169	674	410.2	287.1	113.3	60.01
10.2V	3083	2232	1836	1161	669	407.7	286.3	112.2	58.90
10.5V	2807	2078	1751	1153	663	404.2	285.2	111.2	57.78
10.8V	2556	1916	1618	1134	651	399.6	277.5	110.1	56.67

All mentioned values are average values.

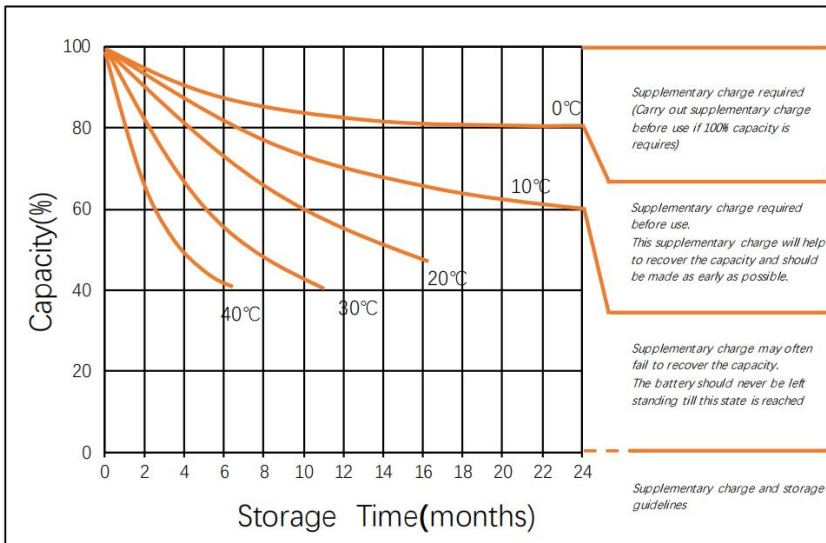
### Charge Characteristic Curve For Cycle Use(IUI)



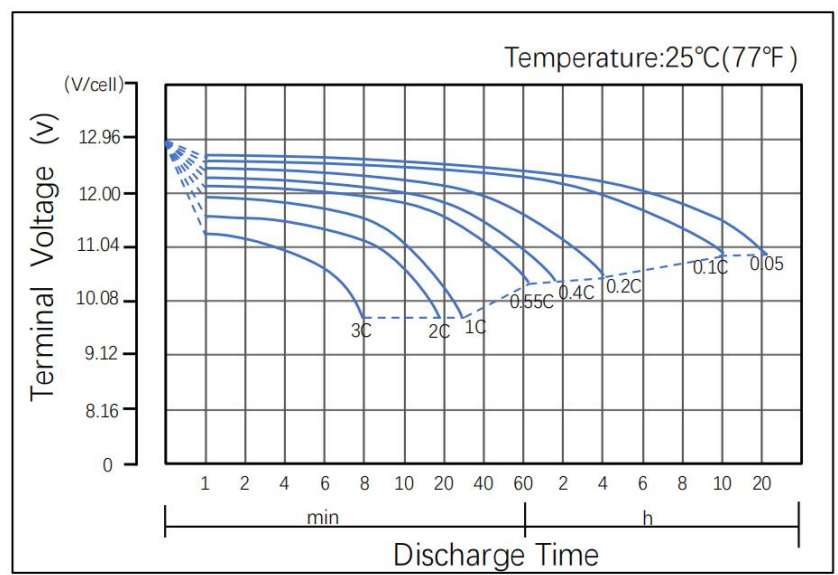
### Cycle Life in Relation to Depth of Discharge



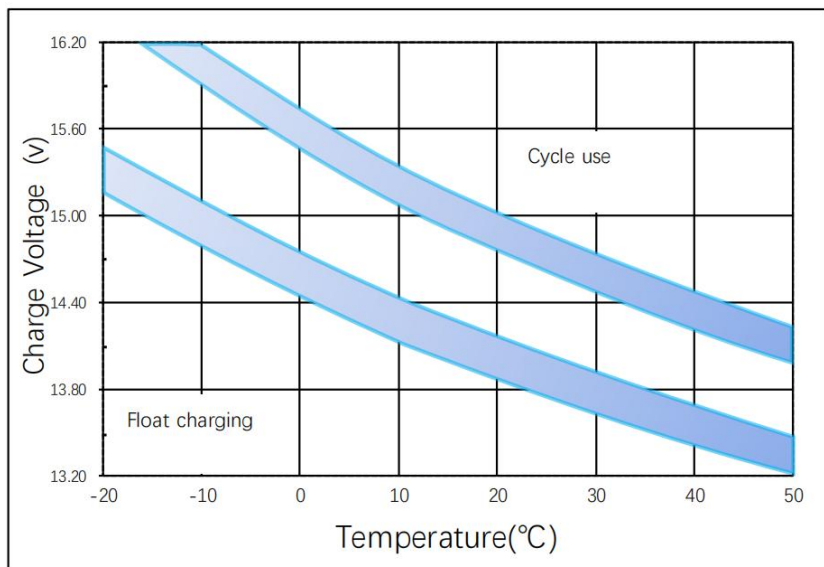
### Storage Characteristics



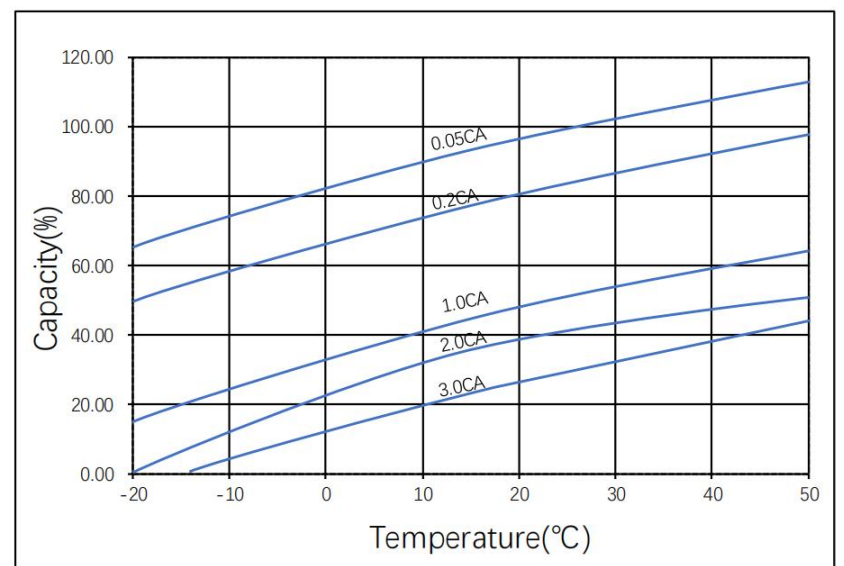
### Discharge Characteristics Curve



### Relationship Between Charging Voltage and Temperature



### Temperature Effects on Capacity



### Maintenance & Cautions

- ※ Every month, recommend inspection every battery voltage;
- ※ Every three months, recommend equalization charge once;  
Equalization charge method:  
Discharge: 100% rate capacity discharge;  
Charge: Max. Current 0.3CA, constant voltage 2.35-2.4V/Cell;
- ※ Effect of temperature on float charge voltage: -3mV/Cell;

### CONTACT Us

**Add:** FL.2, No.12 North Ave.1, Industrial Rd. East, Gusan, Guzhen, Zhongshan, Guangdong, China,  
**T:** +86-760- 8862 5562 | **F:** +86-760-8862 5562  
**Email:** [sales@holybattery.com](mailto:sales@holybattery.com) [johny5@126.com](mailto:johny5@126.com)  
**Website:** [www.holybattery.com](http://www.holybattery.com)